



THE
LUTHERAN
WORLD
FEDERATION
actalliance



The Lutheran World Federation - Myanmar 2022

“LWF envisions the people of Myanmar living in a just society of peace and dignity, united in diversity, able to meet basic needs, achieving full potential, and claiming universal human rights”

The Lutheran World Federation (LWF) is an international non-governmental organization based in Switzerland, serving the Myanmar people since 2008. The organization works in the poorest, most marginalized, and vulnerable parts of the country and among those affected by conflict, displacement, natural disasters, and injustice. LWF Myanmar is a people-centred, rights-based, and value-driven organization.

Rights-based Empowerment

LWF facilitates a process of rights-based empowerment across its programme which respects beneficiaries as rights-holders not recipients of charity. This means narrowing, not filling, the gaps between rights-holders and duty-bearers. Partners include men, women, girls, boys and persons with disabilities. LWF focuses on individuals, communities, and institutions, while heavily mainstreaming gender and climate justice.

LWF Myanmar’s integrated, rights-based empowerment process entails the ca-pacitation of self-reliance groups such as Camp Management Committees, Village Development Committees, and Women’s Groups.

Empowerment implies that these institutions are able to gradually and ultimately provide protection and social cohesion, manage their own development processes and have full knowledge of their responsibilities and rights. At the same time, they will also have the skills to seek services and resources from the duty-bearers. From experience, the process takes 6-8 years to achieve sustainable impact where-in communities “graduate” as fully empowered and self-managed.

LWF Myanmar also supports “Partner Households”, identified through a participatory well-being ranking which identifies the most socio-economically vulnerable. Like community action groups, Partner Households are facilitated to undertake an action reflection cycle as articulated in LWF’s graduation guidelines (self-assessment-plan-implement-self-assessment), based on established indicators defining the level of progress, whereby graduation is eventually reached.

KEY FACTS & FIGURES (Data as of December 2022)

332 livelihood groups and its 4,493 individuals (3,775 women; 718 men) sustainably strengthened their livelihood

310 partner households, (including 132 vulnerable women-headed) report increased income

17,462 internally displaced children (9,209 girls; 17,462 boys) enrolled in school; intentional efforts to increase girl participation

473 educators (174 women; 299 men) applying new techniques/skills

1,665 individuals (1,100 women; 565 men) with increased awareness of gender equality, protection needs, and rights

27 active projects

>30 funding and consortium partners, including related agencies, UN, INGO, bilateral

>EUR 6 million annual budget

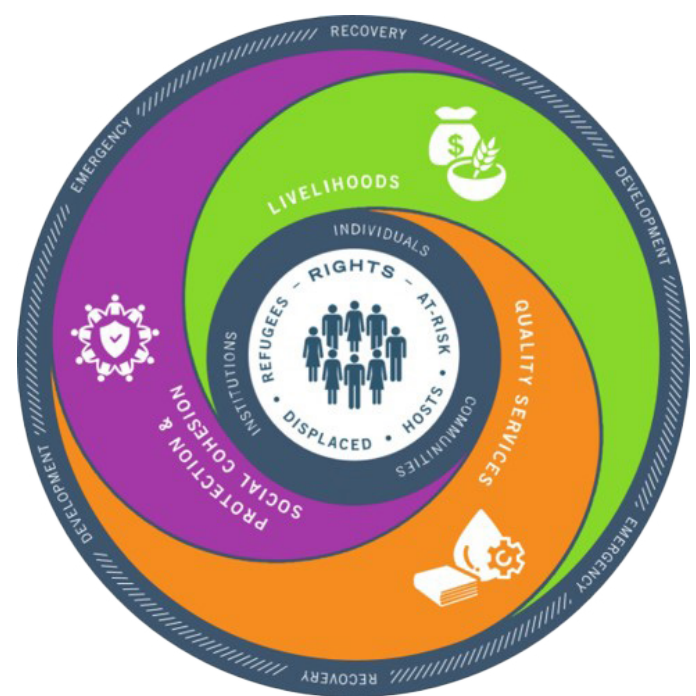
Programmatic Framework

LWF's Programmatic Framework (shown right) is a people-centred, integrated, rights-based empowerment approach implemented within households and communities while influencing institutional duty-bearers. It is highly contextualized, conflict-sensitive, gender-responsive, and climate-smart. The rights-based approach is key to facilitating people to transition from preparedness through the emergency phase to recovery and development. The programme operates across three areas of LWF expertise:

Livelihoods: facilitation of new production techniques, market-based information and linkages, community-run savings and credit schemes, asset transfers to marginalized households, literacy, numeracy, technical skills, and business skills development.

Quality services: building capacity and confidence to network horizontally and vertically with like-minded individuals, groups and institutions and advocate with duty-bearers at all levels on issues, services, and policies that affect people's lives such as access to education, healthcare, water, birth registration, and infrastructure.

Protection and social cohesion: following graduation and advocacy guidelines, empowering people to make their own gender and disability-inclusive development plans and link community development plans with those of government duty-bearers.



Programme Highlights

Education: LWF is the largest INGO education service provider for IDP camps in Central Rakhine State and also works in host communities and across the country programme, improving quality and access to education for over 17,400 children in 2022.

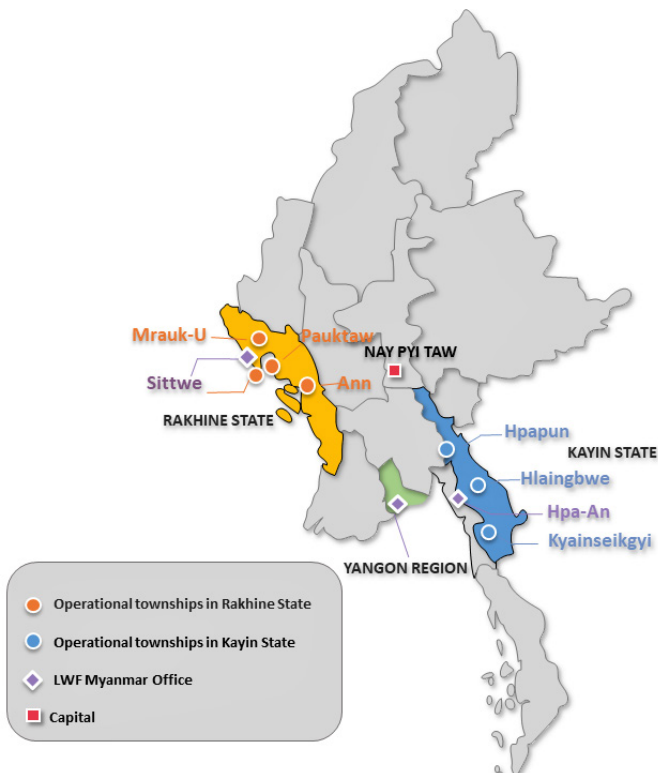
Camp Coordination & Camp Management: in December 2022, LWF coordinated and managed protection, shelter, NFI, and Complaints handling in 10 Rakhine State IDP camps, assisting over 73,000 people, as well as nearly 4,500 people across 31 new displacement sites.

Training and capacity building: LWF has established a premier training team that builds the capacity of staff, community members, and NGO/government clients on practical market-based livelihood promotion.

Gender justice: In 2022, LWF finalized and rolled out an actionable strategy that address gender from a 360° perspective. Different approaches are designed for keeping girls in school and for increasing decision-making power of women in their homes and communities.

Networking and collaboration: LWF is Co-Chair and member of the Humanitarian Country Team (HCT) comprised of UN agencies and INGOs, and serves on the INGO Forum Steering Committee. LWF actively participates in the EiE and Shelter/ CCCM/NFI Clusters, as well as numerous working groups and consortia.

LWF Office in Myanmar



With special appreciation to our partners:

ACT Church of Sweden, Australian Humanitarian Partnership, Australian Lutheran World Service, Bread for the World, Canadian Lutheran World Relief, Christian Aid, Church World Service, Dan Church Aid / Norwegian Church Aid, Community Empowerment and Resilience Association, Diaconia of the Evangelical Church of Czech Brethren, Diakonia, Diakonie Katastrophenhilfe, European Union, Evangelical Lutheran Church of America, Finn Church Aid, German National Committee, Hla Day, Karen Baptist Convention, Myanmar Humanitarian Fund, LWF Member Churches, Rakhine Education Consortium, Government of Switzerland, Turquoise Mountain, UNHCR, partner communities and many others!

Lutheran World Federation Myanmar Office: +95
(9) 793 119 971 / -972
myanmar.lutheranworld.org

Royal White Elephant Hotel, 6th & 7th Floors No.
11 Kan Road, Hlaing Township
Yangon, Myanmar 11051

Subscribe to our LWF Myanmar YouTube Channel: <https://www.youtube.com/%40lwfmyanmar9650/videos>