



Education in Emergencies Programme 2022

“LWF helps the most vulnerable communities claim their right to education through the provision of quality services, capacity building, and advocacy”

The Lutheran World Federation (LWF) Myanmar has been serving people in Myanmar since 2008, currently in Rakhine, and the Kayin States. The organisation manages eight of the 23 Rohingya IDP camps in Rakhine State (five in Sittwe township and three in Pauktaw), and also works with displaced Rakhine and host communities. Across all its work, the LWF approach is rights-based and aims to bridge the nexus between humanitarian response and building resilient and empowered communities.

Education in Emergencies (EiE)

Ensuring access to education for displaced children has been an increasingly urgent challenge since the Covid-19 lockdowns. Now the people face significant new displacements, cooperating with duty-bearers became difficult (including the government no longer paying teacher salaries in IDP camps), and major donors decided to put their funding into emerging emergencies while cutting assistance to the prolonged plight of the Rohingya.

LWF’s main priorities are to ensure continued access to kindergarten to grade 4 (to grade 5 in 2022) education in the eight protracted camps it manages; continue to offer scholarships to post-primary grades 5 to 8 (grades 6 to 9 from 2022) in Sittwe and directly offer the service in Pauktaw camps and ensure access to schooling for children newly displaced from conflict in Rakhine.

The LWF programme covers Access – Quality – Systems Strengthening – Advocacy. All aspects are underpinned by a rights-based empowerment (nexus) approach that builds community capacity in assessment, monitoring, and decision-making throughout the displacement cycle.

Special emphasis is placed on making the teaching and learning environment female-friendly. Because of complex social, cultural, and economic challenges, compared to their male peers, thousands of Rohingya girls are denied their right to education once reaching adolescence – just in the schools that LWF supports.

Due to this challenge, it is challenging to find qualified women teachers who can inspire future generations (and their parents) to pursue education.

KEY FACTS & FIGURES (Data as of December 2022)

59 Temporary Learning Spaces in eight IDP camps, serving over 17,000 children and employing over 200 volunteer teachers

A total of 32,525 students (15,284 girls; 17,241 boys) directly benefited from LWF’s education work

LWF trained and mobilized 417 (108 female) volunteer IDP teachers and 82 (30 female) Child-Friendly Space (CFS) facilitator and Non-Formal Education (NFE) facilitators to teach IDP and vulnerable children

Post-primary tuition classes in five IDP camps, rising to eight in mid-2022, serving over 600 children

20 Child-Friendly Spaces Centre, in Sittwe, Pauktaw, and Mrauk-U Townships, serving over 1,200 children and over 80 facilitators to promote physical, social, and emotional development through child friendly activities

EUR 1.9 million is needed through December 2024 to continue service provision because a major funding commitment has ended

Rights-Based Empowerment

LWF takes a nexus approach to education in Rakhine State, balancing the need for emergency response and direct service provision with a longer-term a rights-based empowerment approach. LWF is also moving from a focus on access to quality of education, and to increasing ownership and participation of community-based rightsholders at every stage of the project. LWF is an active advocate within the Education Cluster at national and subnational levels, working closely with other national and international organisations supporting education in Myanmar.

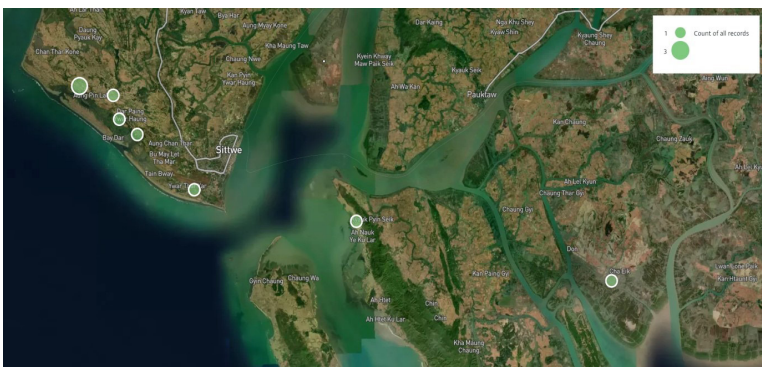
EiE Programme Highlights

In 2023, LWF supported 59 temporary learning spaces in IDP camps, 20 child-friendly spaces and 47 Non-Formal Education centres in camps and villages, and 20 government formal schools in the townships of Sittwe, Pauktaw, and Mrauk-U. A total of 19,578 students (including 8,817 girls) directly benefited from LWF's education work, including 11,549 IDP children (5,180 girls). A total of 665 teachers (224 female) benefited. LWF trained and mobilized 417 (108 female) volunteer IDP teachers and 82 (30 female) Child-Friendly Space (CFS) animators and Non-Formal Education (NFE) facilitators to teach IDP and vulnerable children. This work has significantly contributed to increasing access to quality education in Rakhine.

WF's activities include:

- Renovation and construction of educational facilities
- Distribution of teaching and learning kits, and recreational materials for CFS
- Incentives for TLS teachers and CFS animators
- Training of teachers, and capacity-building of PTAs
- Provision of camp-based post-primary tuition classes
- Awareness-raising on issues around access to education, including psychosocial support, child protection, menstrual hygiene management, and sexual and reproductive health
- Training and awareness-raising on inclusive education, particularly regarding girls and children with disabilities

IDP Camp Locations



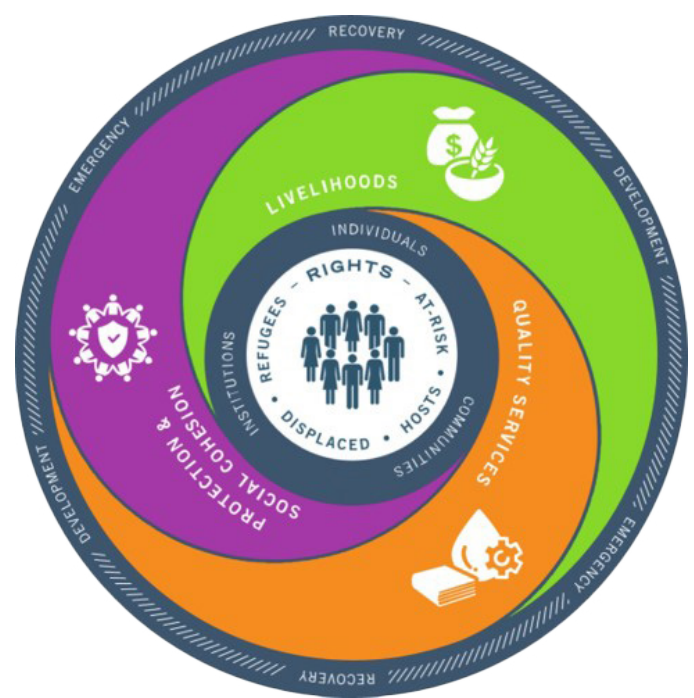
With special appreciation to our partners:

ACT Church of Sweden, Australian Humanitarian Partnership, Australian NGO Cooperation Program (ANCP), Australian Lutheran World Service, Bread for the World, Can Do Australia, Global Affairs Canada (GAC), Canadian Lutheran World Relief, Church World Service, Community Empowerment and Resilience Association, Deutsche Gesellschaft für Internationale Zusammenarbeit (GIZ), DECCB, Diakonia, Diakonie Katastrophenhilfe, ELCA, Finn Church Aid, German National Committee, Hla Day, KBC, member churches, Myanmar Humanitarian Fund, Radiohjälpen, Rakhine Education Consortium, Save the Children, Government of Switzerland, Turquoise Mountain, UNHCR, UN Women, scores of women's CSOs/NGOs, partner communities, local duty-bearers, and many others!

Lutheran World Federation Myanmar Office: +95
(9) 793 119 971 / -972
myanmar.lutheranworld.org

Royal White Elephant Hotel, 6th & 7th Floors No.
11 Kan Road, Hlaing Township
Yangon, Myanmar 11051

Subscribe to our LWF Myanmar YouTube Channel: <https://www.youtube.com/%40lwfmyanmar9650/videos>



Shifting Donor Priorities

LWF focuses on improving teaching and learning environments and education opportunities, to achieve quality and inclusive education for all children in Rakhine State. Major interventions include repair and reconstruction of school buildings, installation of WASH facilities, provision of teaching and learning kits, training for teachers and Parent-Teacher Associations, scholarships for vulnerable IDP children, incentive payments to volunteer IDP teachers and regular monitoring and support to school management committees, Parent Teachers Association and Child Clubs. LWF is also looking at the possibility of incentivizing girl education by targeting livelihoods to parents who demonstrate commitment to helping daughters complete schooling (post-primary, secondary, and beyond). To promote disability inclusion, social and physical barriers are identified through awareness raising and sensitization of communities. This is followed by community-based actions to facilitate children with disabilities to access education.

Shifting Donor Priorities

Since February 2021, donor attention has focused on newly emerging crises in Myanmar and abroad. The prolonged plight of the Rohingya is being forgotten. In 2022, the LWF Education Team devised a strategy to better address this challenge that includes:

- LWF is the largest education provider for IDPs in Central Rakhine State and lost its flagship donor in 2022
- Education access is now at risk for over 10,200 highly vulnerable children.